

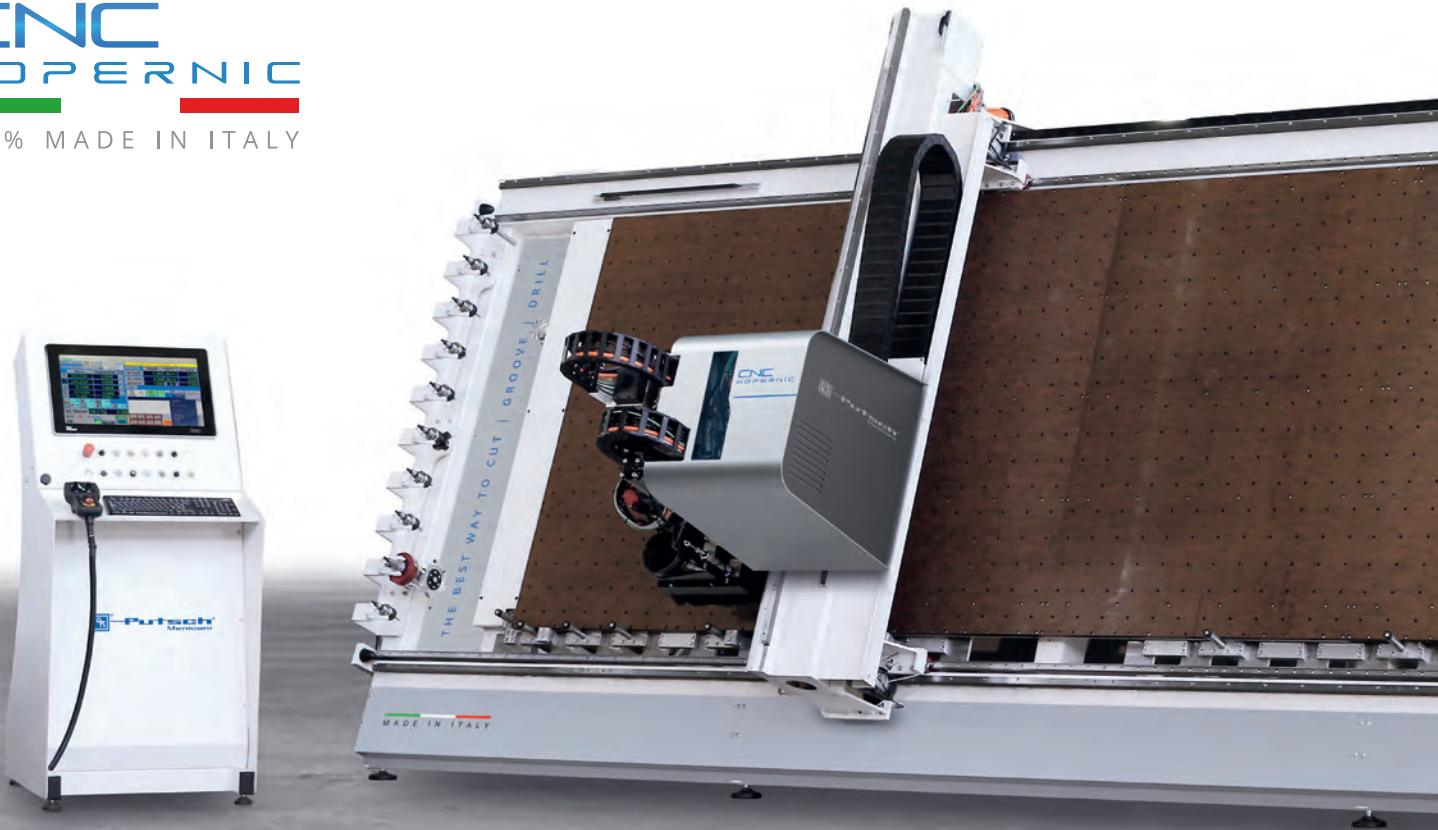


*The best way  
to cut | groove | drill*

**CNC**  
**KOPERNIC**  
100% MADE IN ITALY

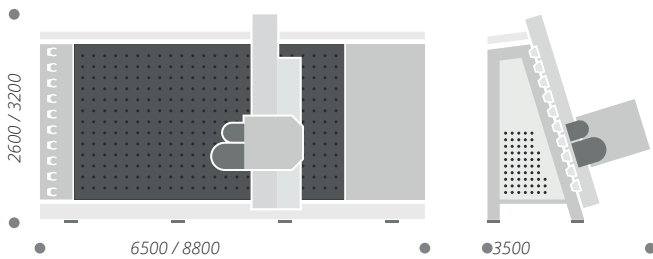
TECHNOLOGY | RELIABILITY | INNOVATION

**CNC  
KOPERNIC**  
100% MADE IN ITALY



## CNC KOPERNIC VERTICAL MACHINING CENTER

The right CNC which allows to process various kinds of panels while saving space in the workshop. More flexibility and higher performances allows users to increase productivity and avoid dead times.



vertical machining center dimensions



### NESTING

It allows to create different parts of an item by an optimized process on a single panel. Substantial waste reduction with shorter processing times.



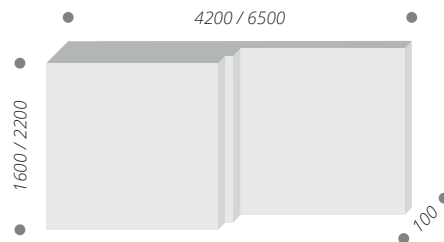
### DRILLING

The automatic tool changer with 10 different position makes it so that you can perform different kinds of drilling styles both with standard tools and with special ones.



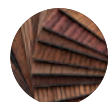
### V-GROOVING

The V-Grooving operation is improved thanks to the 10 position tool changer where several types of cutters can be stored.



processing capacity

**PROCESSING MATERIALS**  
CNC Kopernic is designed for the processing of:



Wood panels



Composite Materials



Trespa®



Insulated Panels



Corian®

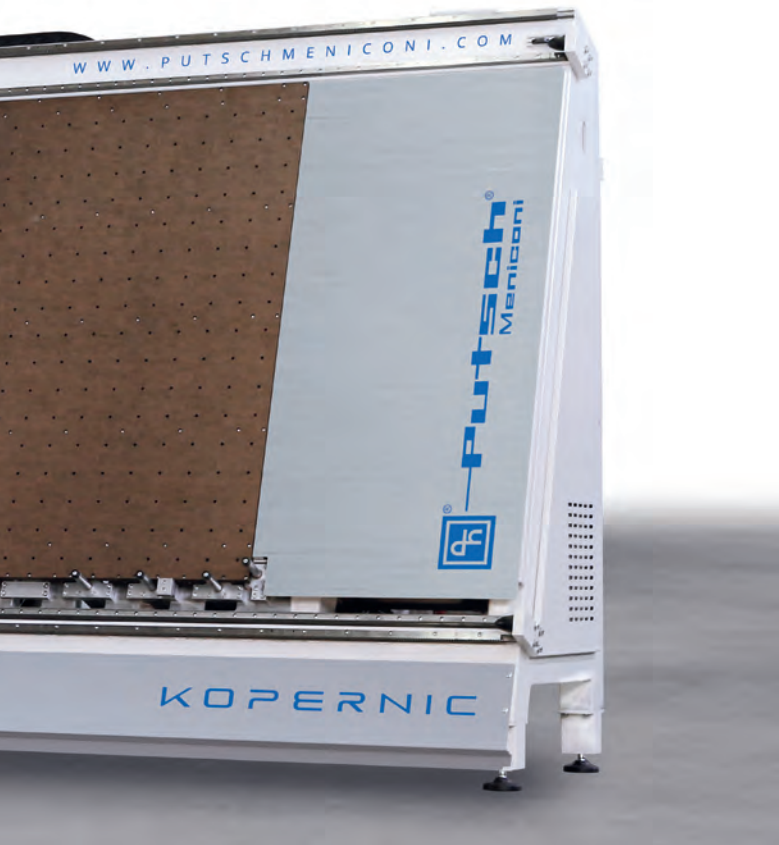


Plasterboard



Plastics Materials





## TECHNICAL DETAILS

**Working area** mm: X 4200 / 6500 - Y 1600 / 2200 - Z 100  
 inches: X 165.4/ 255.9 - Y 62.9 / 86.6 - Z 3.9

**Overall dimensions** mm: 6500 / 8800 x 3500 x 2600 / 3200  
 inches: 255.9 / 346.5 x 137.8 x 102.4 / 125.9

**Axis speed** X 45 - Y 30 - Z 15 m/min

**Working table** Vacuum zone with MDF sacrificial panel - 8 locking areas selectable from UI

**Vacuum pump** 250 m<sup>3</sup>/h - 6 Kw

**Second vacuum pump (optional)** 250 m<sup>3</sup>/h - 6 Kw

**Electrospindle** 8 Kw - cone ISO 30 - Clamp ER32

**Option** C Axis (for aggregates)

**Tool changer** Automatic

**Tool storage** 10 positions

**Positions for aggregates** 10 positions

**Blade diameter /Cutter aggregate** 150 mm

**Option electro-spindle cutter / blade Ø** 5.5 Kw. - blade / cutter diameter 200 mm

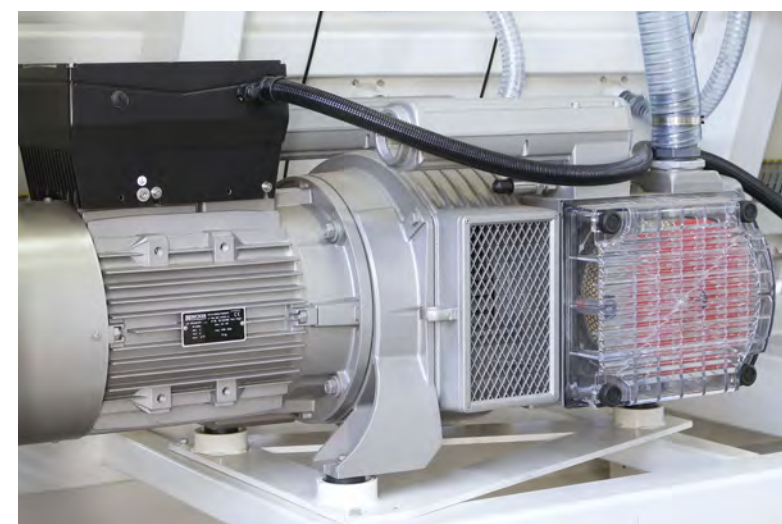
**Guides lubrication** Automatic

**Total weight** Approx. 2900 Kg  
 Approx. 6,394 lbs.

**Absorbed power** 19 Kw (OPT. 25 Kw)



Automatic Spindle change





# Putsch®

## SOFTWARE DESIGN AND FUNCTIONALITY



### MACHINE STATUS

Operator control panel. Machine status selection mode. Viewable all data processing. Axes position and machining parameters, working speed, rapid speed, spindle rotation speed.



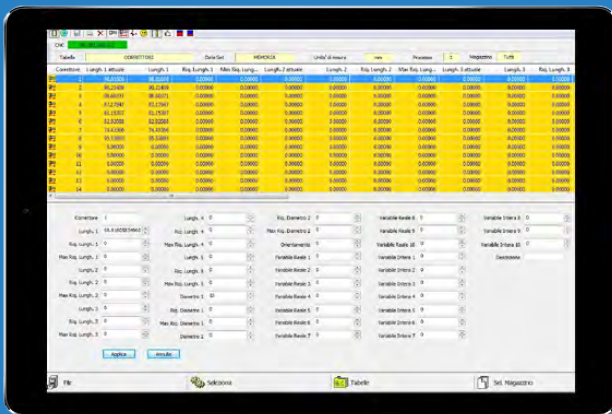
### MACHINE SETTING AND ACTIVATION

Operator control panel. Setting page for sacrificial panel dimensions and manual movement of the machine's functional elements. Activation of spindle heating programs. Tool changer reset.



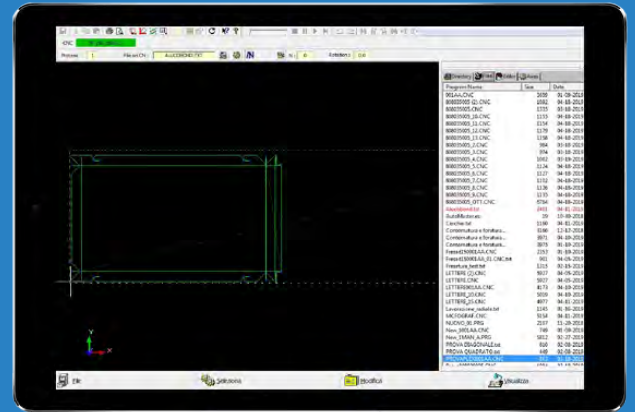
### TOOL PARAMETERS

Tool table with characteristic parameters



### EXECUTION CHECK

Operator panel. Machining simulation. Tool path display and progression of the work in progress



## Putsch® and Company, Inc.

354 Cane Creek Rd. Fletcher, NC 28732

[www.putschusa.com](http://www.putschusa.com) | [panelpro@putschusa.com](mailto:panelpro@putschusa.com)

Technical details and pictures are only indicative. The manufacturer reserves the right to carry out modifications without prior notice.